

# CONTA-CABLE/ KES Cable Entries

**CONTA**CLIP



Screw-on mount from the outside

Screw-on mount from the inside with threaded bushes and latching clips

Latched (snap-on) mount using latching hooks

EN  DE



# CONTA-CABLE/ KES Cable Entry



Screw-on mount from the outside

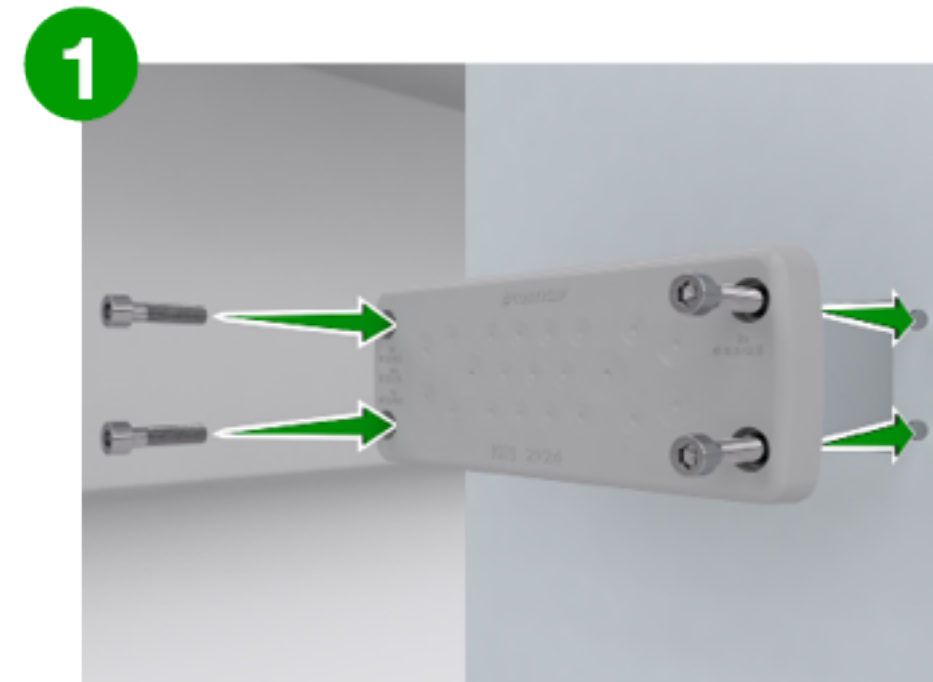
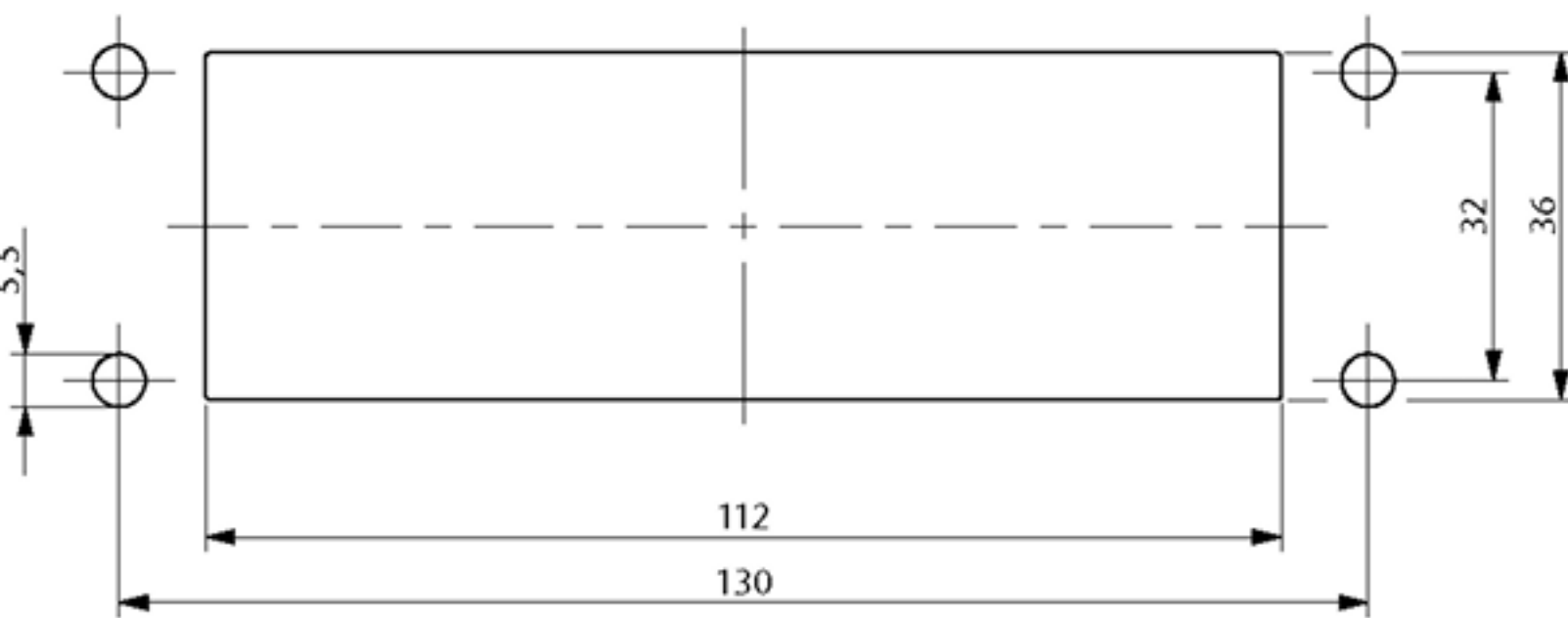
Screw-on mount from the inside with threaded bushes and latching clips

Latched (snap-on) mount using latching hooks

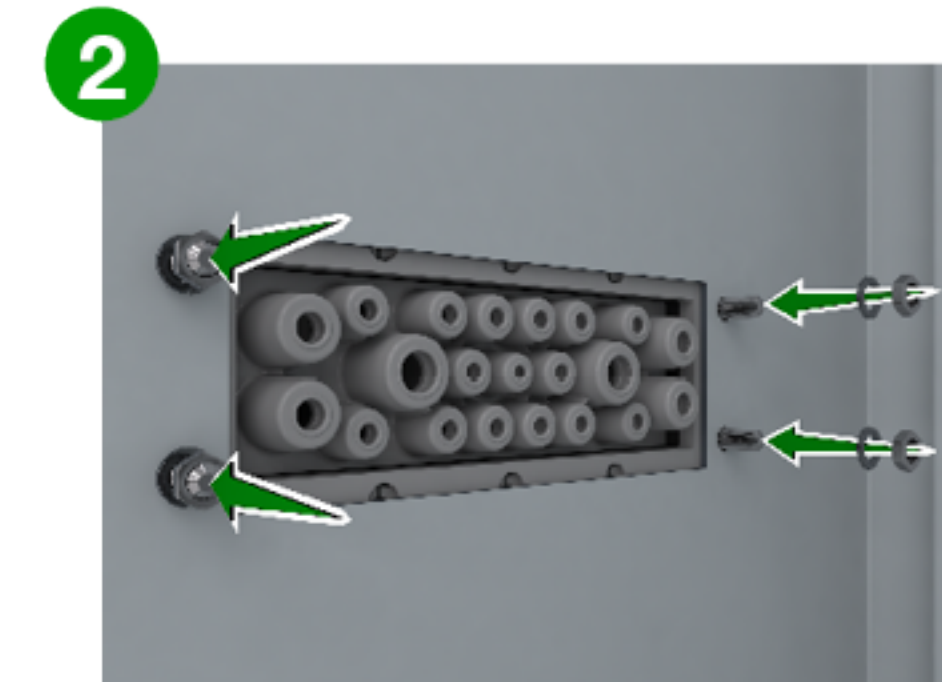


## PRODUCT DATA

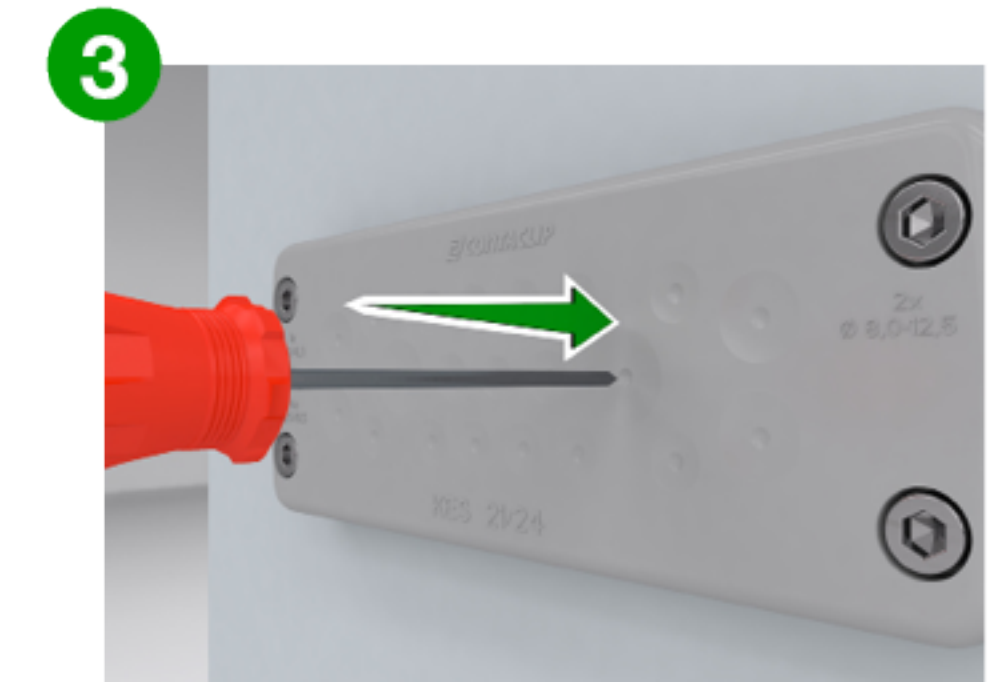
## INSTALLATION



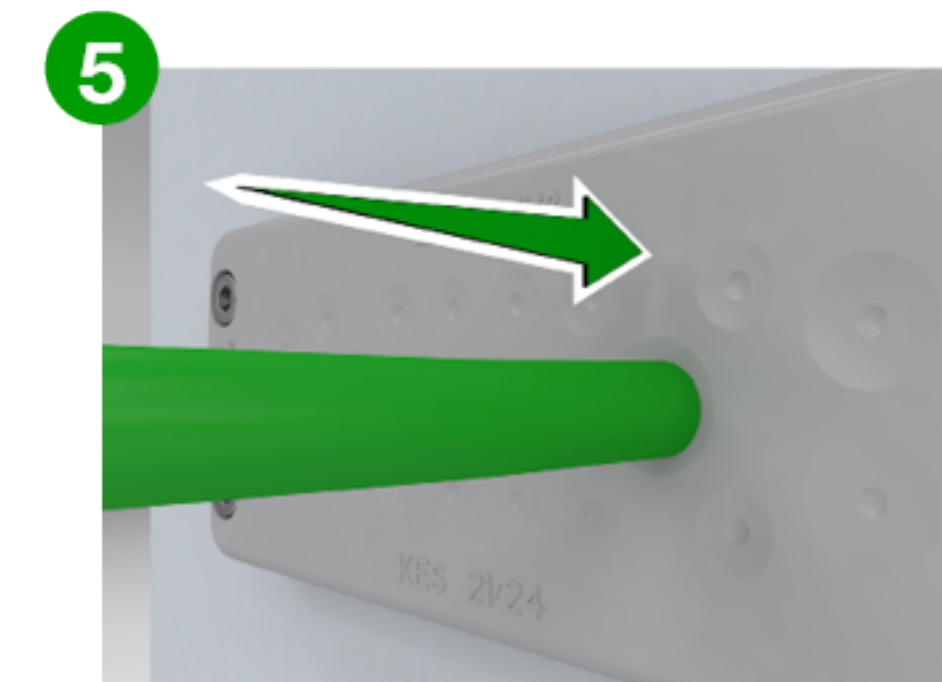
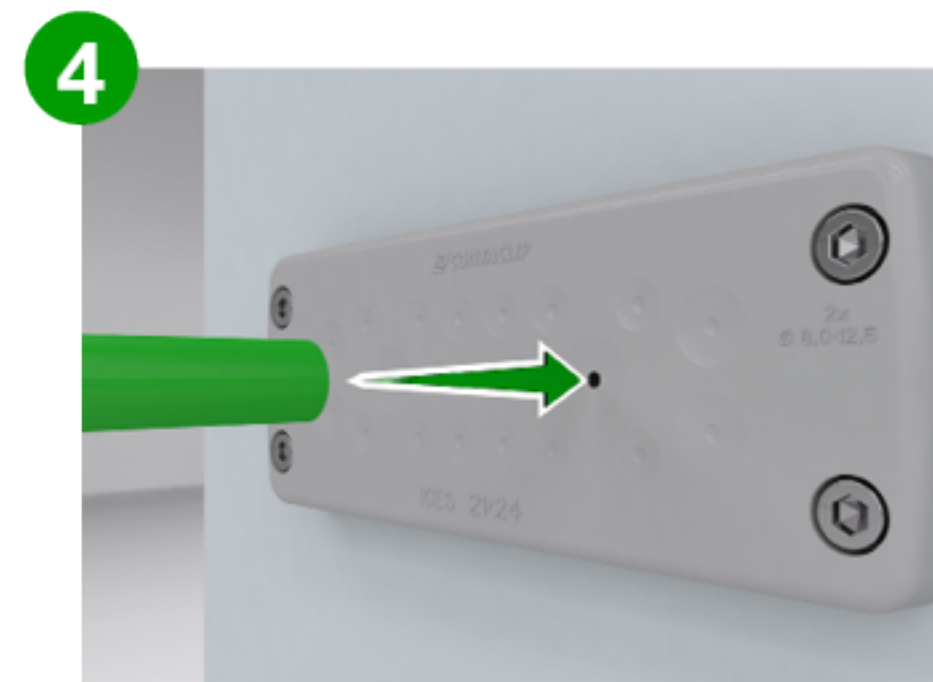
Insert 4 M5 screws.



Use tightening torque of 3 NM.



Pierce the membrane at the push-through point.



Push through to the inside.

 According to UL Standard 508A (File E489821), the following Conditions of Acceptability apply:

### NEMA Type 4/4X

Only applies when the KES variant is secured with screws and the cables/wires have max. diameter of the pierced membrane holes.

### NEMA Type 1

When the KES variant is secured with screws and fitted with smaller cables/wires.

### NEMA Type 1

For all KES variants secured only by latching clips.



# CONTA-CABLE/ KES-GB Cable Entry



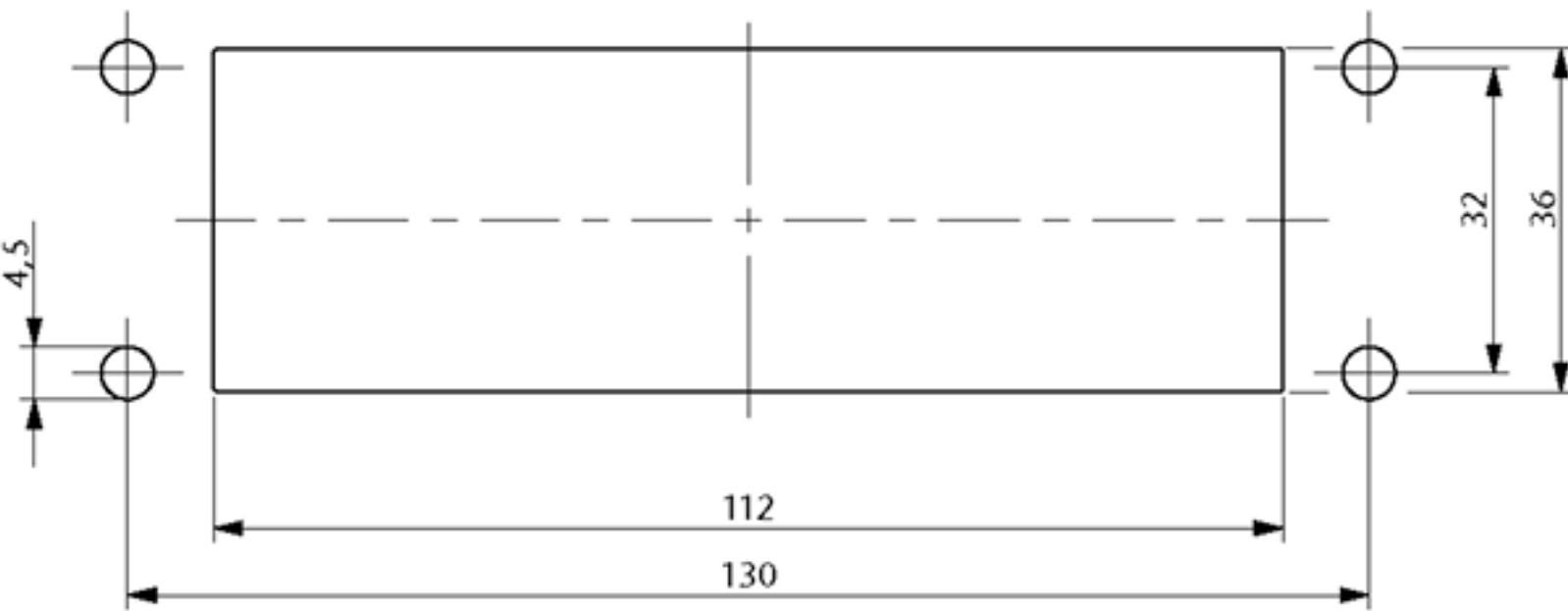
Screw-on mount from the outside

Screw-on mount from the inside with threaded bushes and latching clips

Latched (snap-on) mount using latching hooks



## PRODUCT DATA



 According to UL Standard 508A (File E489821), the following Conditions of Acceptability apply:

### NEMA Type 4/4X

Only applies when the KES variant is secured with screws and the cables/wires have max. diameter of the pierced membrane holes.

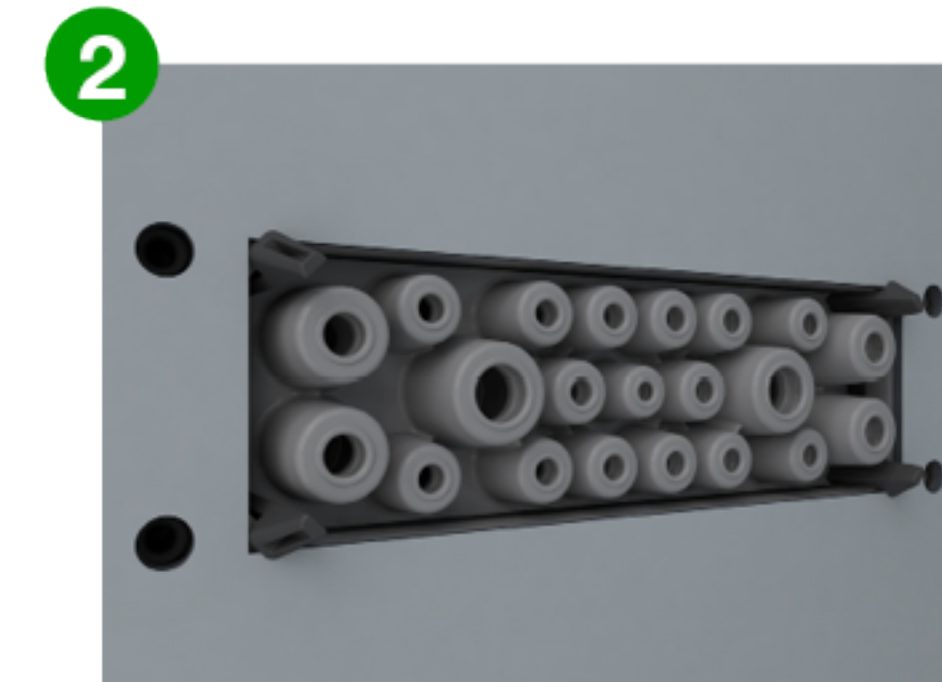
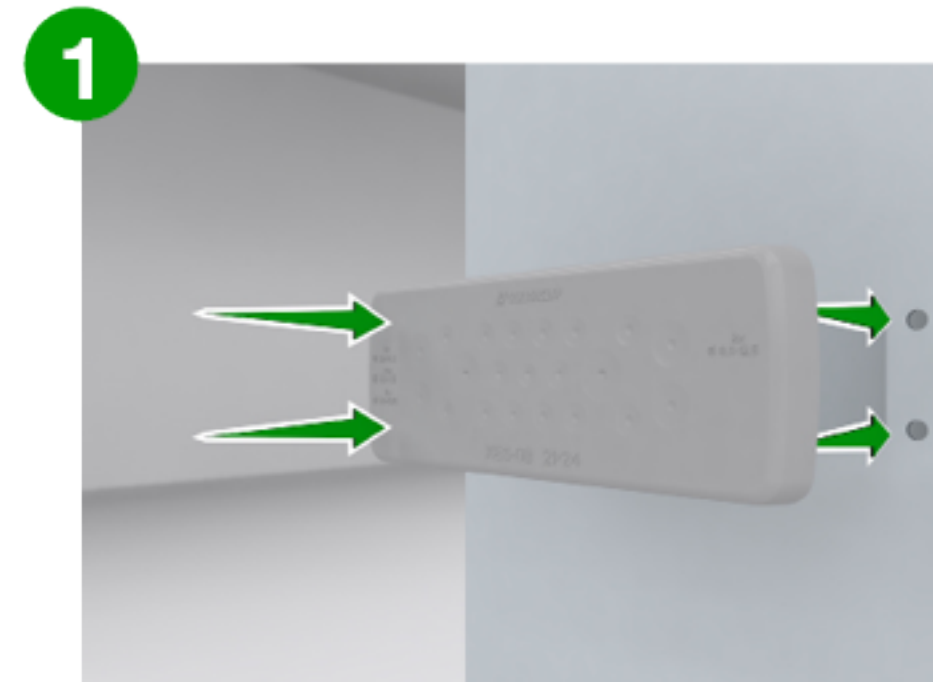
### NEMA Type 1

When the KES variant is secured with screws and fitted with smaller cables/wires.

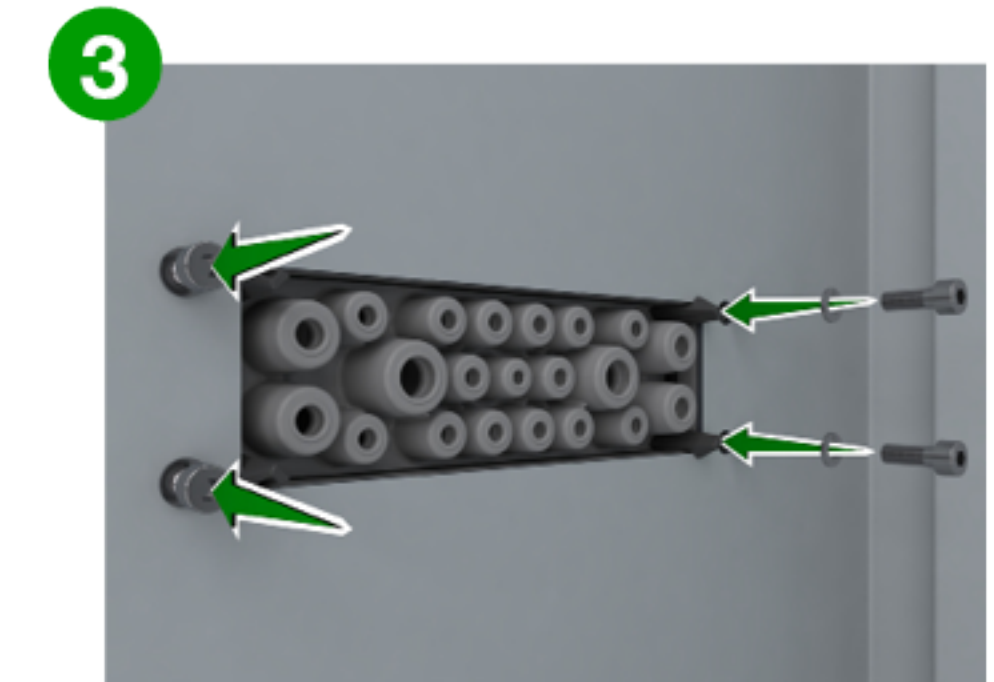
### NEMA Type 1

For all KES variants secured only by latching clips.

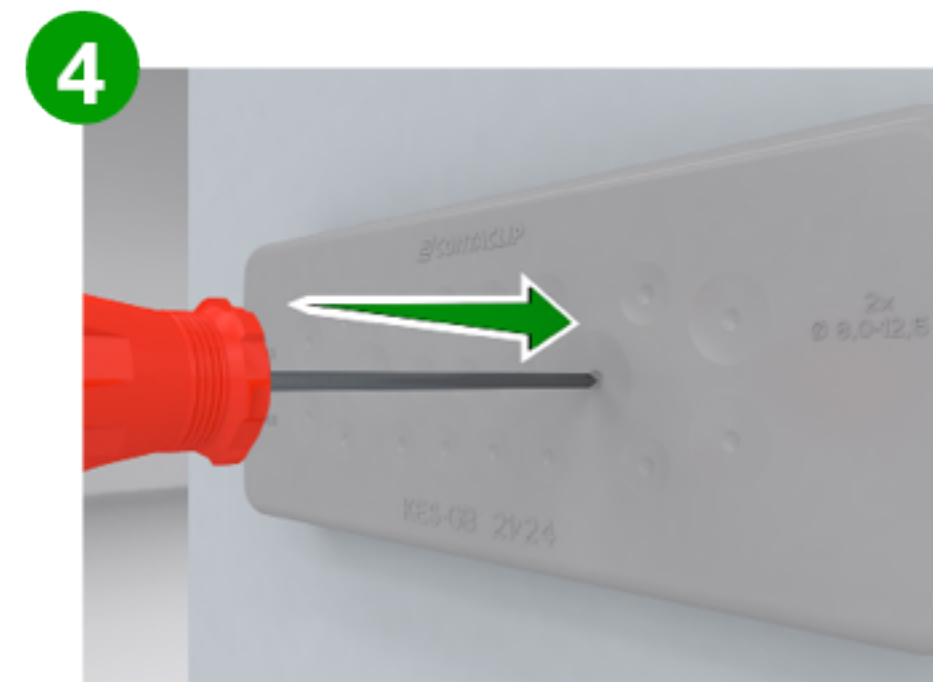
## INSTALLATION



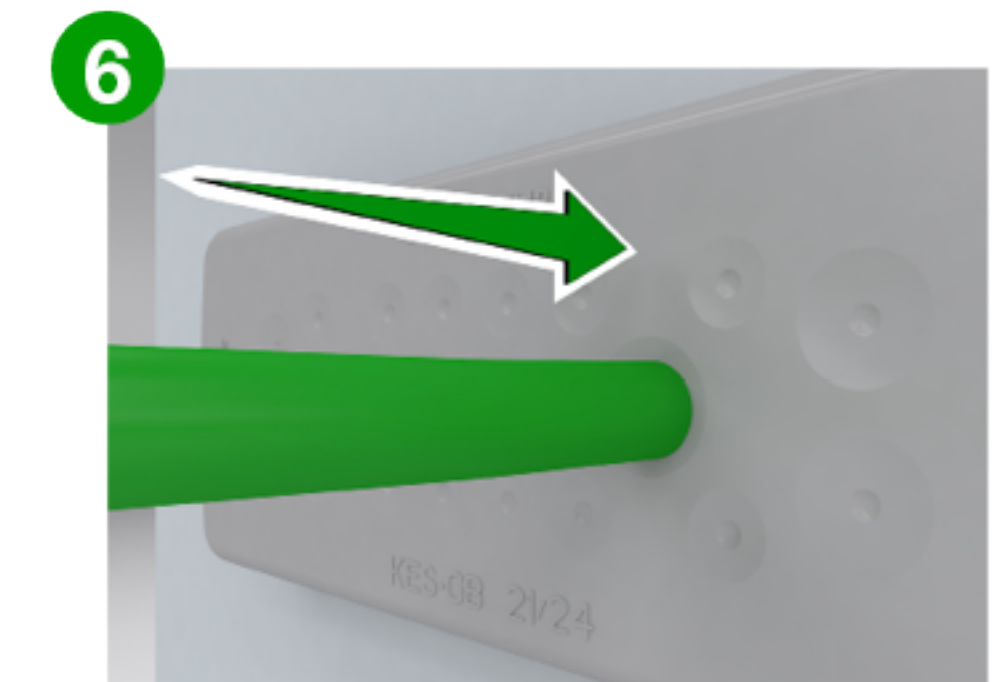
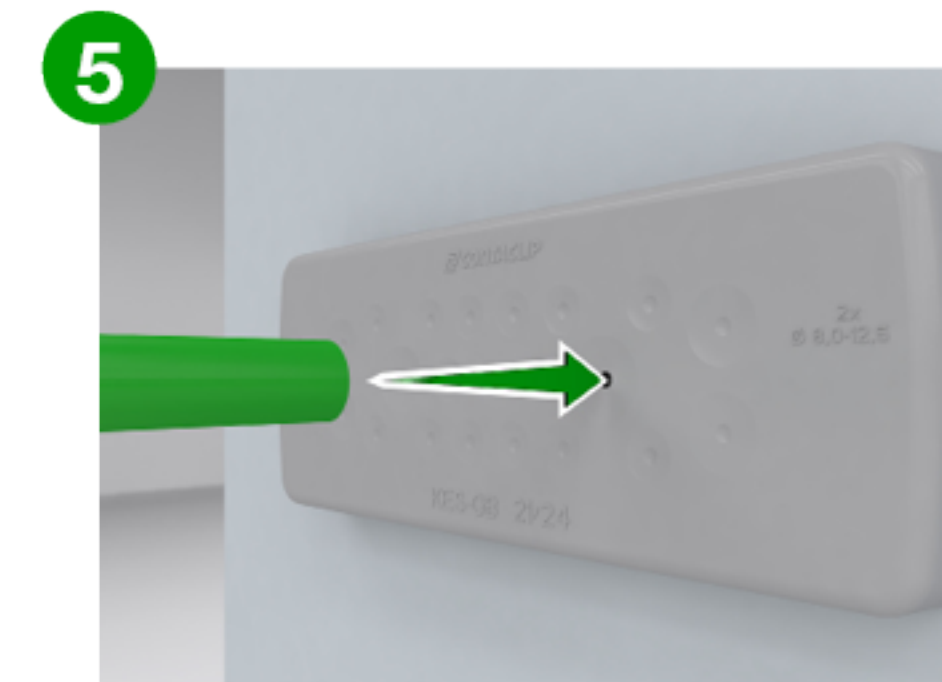
Push through from outside until latching clips click in.



Insert 4 M5 screws. Use tightening torque of 3 NM.



Pierce the membrane at the push-through point.



Push through to the inside.

# CONTA-CABLE/ KES-R Cable Entry

**CONTA**CLIP



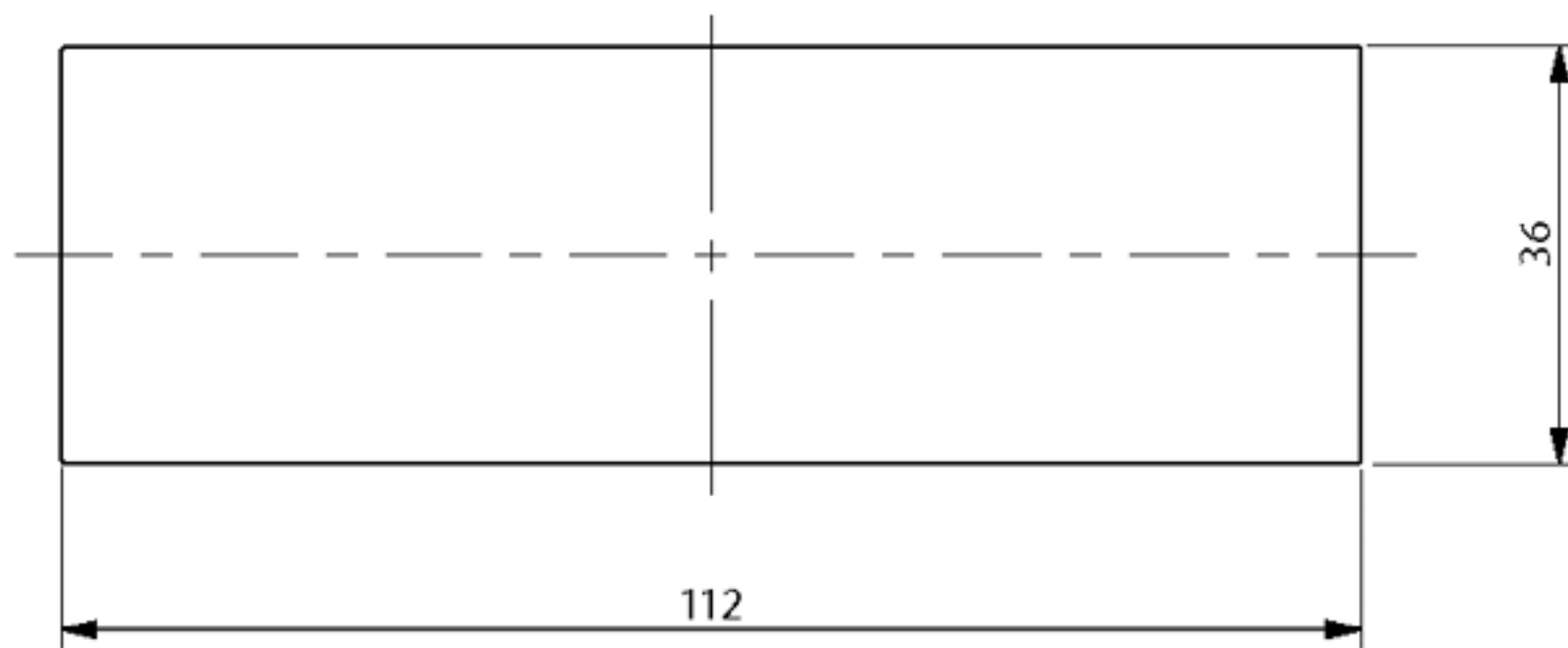
Screw-on mount from the outside

Screw-on mount from the inside with threaded bushes and latching clips

Latched (snap-on) mount using latching hooks

EN DE

## PRODUCT DATA



Sheet thickness: 1.5 mm – 2.0 mm

 According to UL Standard 508A (File E489821), the following Conditions of Acceptability apply:

### NEMA Type 4/4X

Only applies when the KES variant is secured with screws and the cables/wires have max. diameter of the pierced membrane holes.

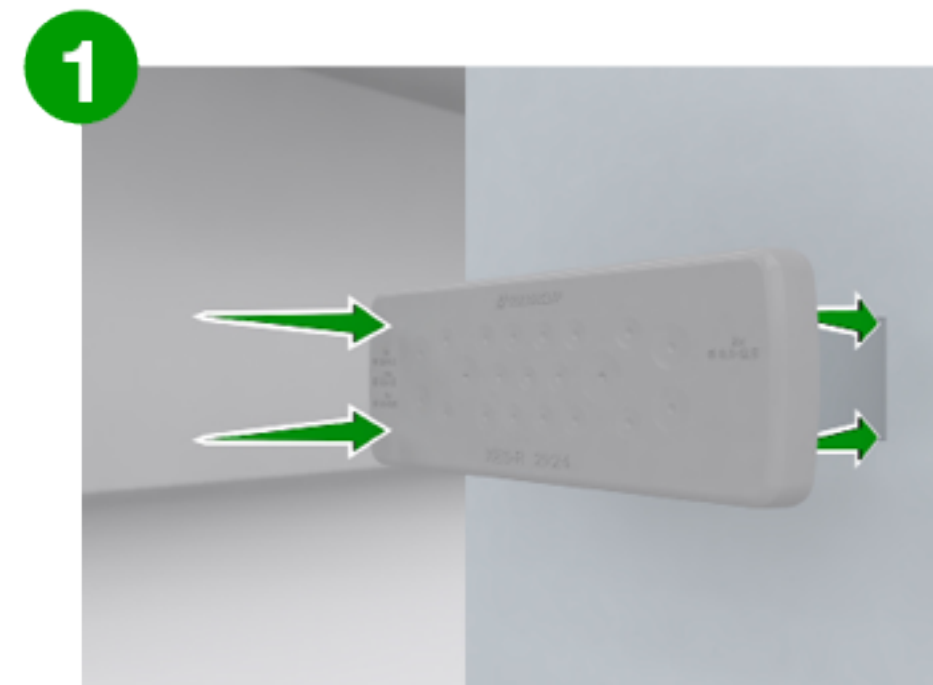
### NEMA Type 1

When the KES variant is secured with screws and fitted with smaller cables/wires.

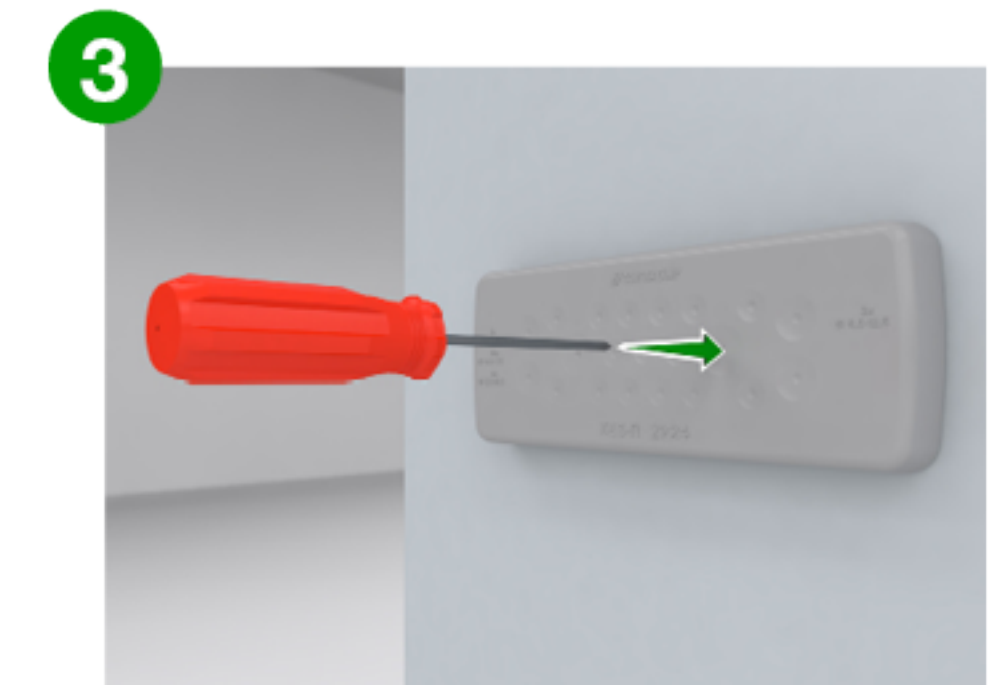
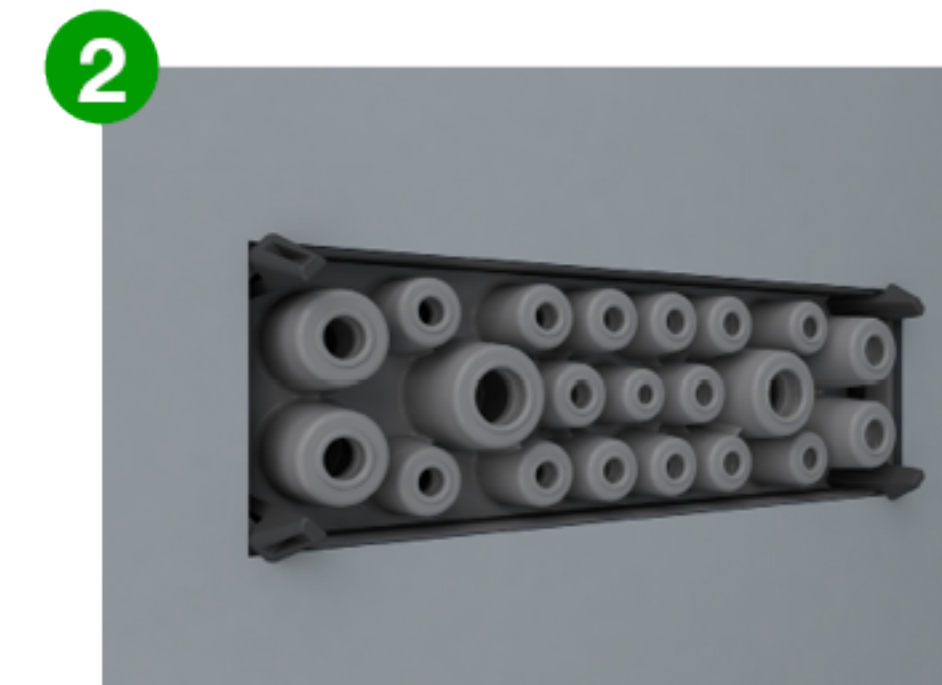
### NEMA Type 1

For all KES variants secured only by latching clips.

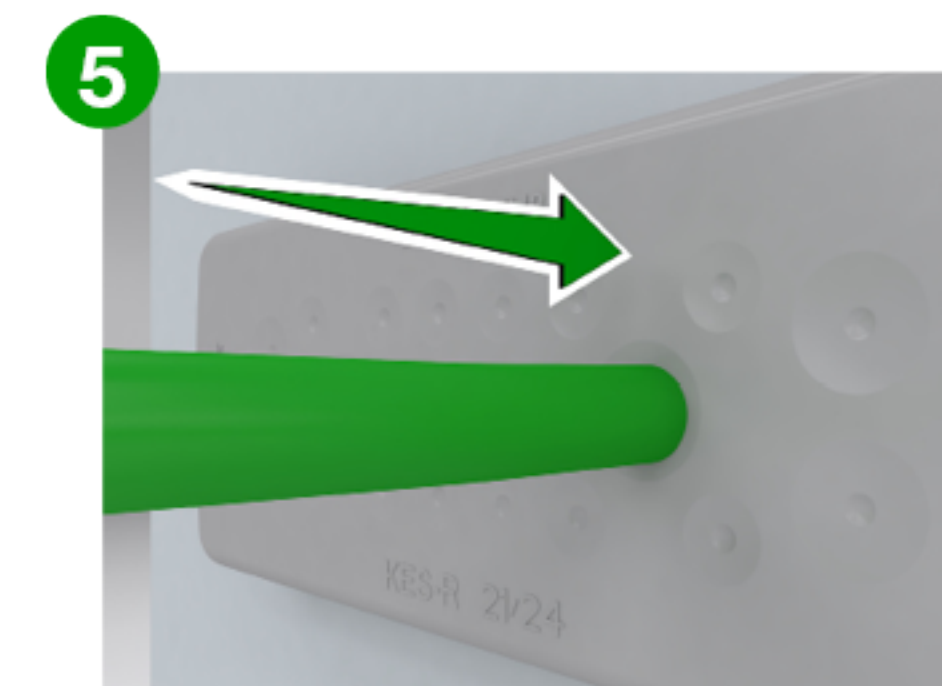
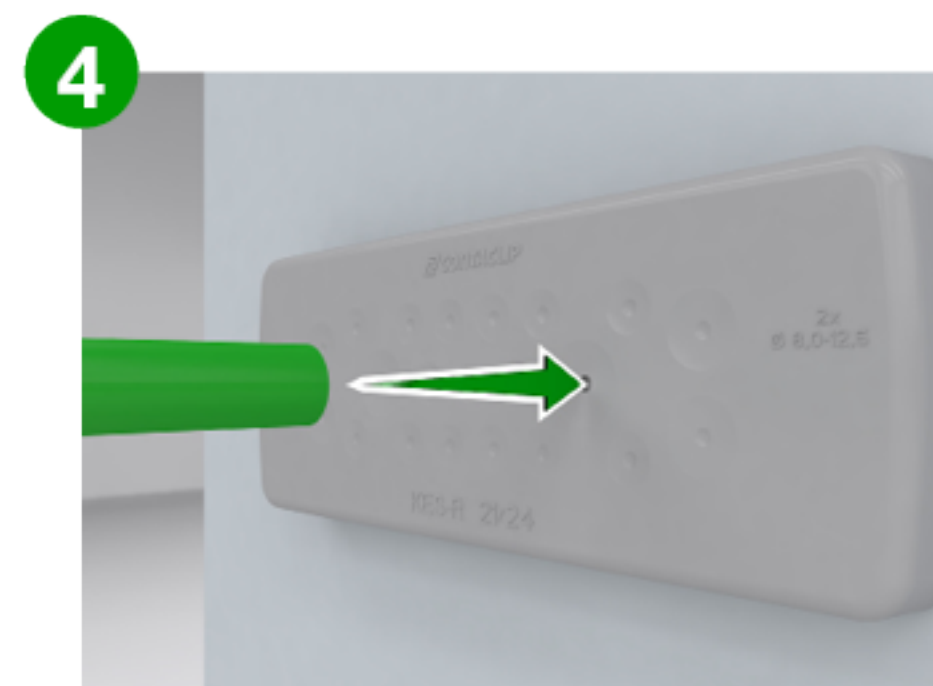
## INSTALLATION



1 Push through from outside until latching clips click in.



3 Pierce the membrane at the push-through point.



5 Push through to the inside.